

Leinwand  
Plain

## Plain 1/1

### 100% Cotton

	Item designation	Weight gsm	Thread count		Ne		Construction Threads per inch	
			cm	inch	Warp	Weft	Warp	Weft
Renforce light	3027	117	57	144	30	30	76	68
Renforce	3030	126	59	150	30	30	75	75
Percale	4731	118	79	200	40	40	120	80
Fiber batiste	5440	96	94	238	60	60	138	100
Noble batiste extrafine	6190	82	113	286	80	90	157	129
Noble batiste superfine	6495	79	128	324	100	90	180	144

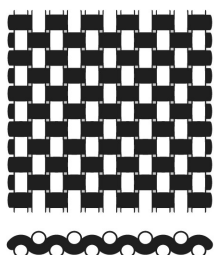
### 100% GOTS-Cotton (Organic Cotton)

	Item designation	Weight gsm	Thread count		Ne		Construction Threads per inch	
			cm	inch	Warp	Weft	Warp	Weft
GOTS-Renforce - GOTS	3030 GOTS	126	59	150	30	30	75	75
GOTS Percale - GOTS	4731 GOTS	118	79	200	40	40	120	80
GOTS cotton batiste - GOTS	5440 GOTS	96	94	238	60	60	138	100

### 52% LENZING™ Lyocell Micro / 48% Cotton

	Item designation	Weight gsm	Thread count		Ne		Construction Threads per inch	
			cm	inch	Warp	Weft	Warp	Weft
MicroTencel/cotton batiste	5410	97	95	241	60	60	138	103

All mentioned specifications are average values.



**Leinwand**  
Plain

## Plain 1/1

### 50% LENZING™ Lyocell Micro / 50% Cotton

	Item designation	Weight gsm	Thread count		Ne		Construction Threads per inch	
			cm	inch	Warp	Weft	Warp	Weft
			Micro-Tencel/cotton fine batiste	6210	85	123	313	90

### 65% Polyester / 35% Cotton

	Item designation	Weight gsm	Thread count		Ne		Construction Threads per inch	
			cm	inch	Warp	Weft	Warp	Weft
			PES/cotton percale	4430	109	73	186	45

### 35% Kanecaron / 35% Cotton / 30% Modal

	Item designation	Weight gsm	Thread count		Ne		Construction Threads per inch	
			cm	inch	Warp	Weft	Warp	Weft
			Kanecaron fp-Percale - Flame retardant	Kan70fd	139	83	212	36

All mentioned specifications are average values.



## Sateen 4/1

### 100% Cotton

	Item designation	Weight gsm	Thread count		Ne		Construction Threads per inch	
			cm	inch	Warp	Weft	Warp	Weft
			Fiber sateen	5031	125	81	206	40
Fine sateen	6845	110	113	286	60	60	173	113
Dobby fine satin - doobby weave	6845 doobby	110	113	286	60	60	173	113
Noble sateen	7557	97	131	332	80	80	185	147

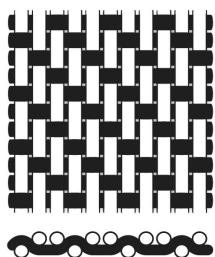
### 100% Organic Cotton (GOTS)

	Item designation	Weight gsm	Thread count		Ne		Construction Threads per inch	
			cm	inch	Warp	Weft	Warp	Weft
			Fiber sateen - GOTS	5031 GOTS	125	81	206	40

### 100% LENZING™ Lyocell Micro

	Item designation	Weight gsm	Thread count		Ne		Construction Threads per inch	
			cm	inch	Warp	Weft	Warp	Weft
			Micro Tencel fine sateen	7240	112	113	287	60

All mentioned specifications are average values.



**Köper**  
*Twill*

## Twill 2/1

100% Cotton

	Item designation	Weight gsm	Thread count		Ne		Construction Threads per inch	
			cm	inch	Warp	Weft	Warp	Weft
			Fine twill	5435	126	89	226	40

All mentioned specifications are average values.