

**Köper**  
*Twill*

*downproof*

## Twill 2/1

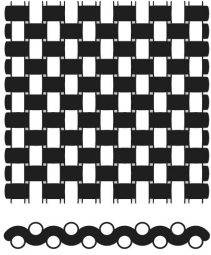
### 100% Cotton

	Item designation	Weight gsm	Thread count		Ne		Construction Threads per inch	
			cm	inch	Warp	Weft	Warp	Weft
Twill	KJ	188	77	196	30	20	117	79
Fine twill	KL	156	89	227	40	30	130	97
Mako Twill	KM	153	98	250	40	40	140	110
Mako Twill - dobby-weave	KM Dobby	153	99	252	40	40	131	121
Fine twill, light	KE	122	115	291	60	60	139	152
Fine twill, light - dobby weave	KE-Dobby	122	115	293	60	60	145	148
Noble-Twill	K 170	95	159	405	100	100	215	190
Premium Twill	K 200	89	165	420	110	110	220	200

### 100% Organic Cotton (GOTS)

	Item designation	Weight gsm	Thread count		Ne		Construction Threads per inch	
			cm	inch	Warp	Weft	Warp	Weft
Fine twill - GOTS-Finish	KL-GOTS	155	89	227	40	30	130	97

All mentioned specifications are average values.



**Leinwand**  
*Plain*

*downproof*

## Plain 1/1

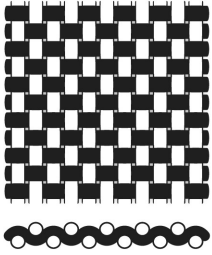
### 100% Cotton

	Item designation	Weight gsm	Thread count		Ne		Construction Threads per inch	
			cm	inch	Warp	Weft	Warp	Weft
			Mako Cambric	TE 70	138	88	223	40
Down batiste	TE 100	108	105	266	60	60	134	132
Down batiste Stripes - Dessin 050	TE 100	108	107	272	60	60	137	135
Fine down batiste	TE 135	93	121	307	80	80	154	153
Fine down batiste	TE 150	88	131	334	90	90	184	150
Noble down batiste	TE 200	77	138	351	110	110	179	172
Premium down batiste	TE 250	73	144	365	120	120	193	172
Superior down batiste	TE 270	70	150	380	120	150	194	186

### 100% Organic Cotton (GOTS)

	Item designation	Weight gsm	Thread count		Ne		Construction Threads per inch	
			cm	inch	Warp	Weft	Warp	Weft
			Mako-Cambric - GOTS	TE	138	88	223	40
Down Batiste - GOTS	TE	108	105	266	60	60	135	131
Fine down batiste - GOTS	TE	94	121	307	80	80	154	153

All mentioned specifications are average values.



Leinwand  
Plain

downproof

## Plain 1/1

### 52% LENZING Lyocell Micro/ 48% Cotton

	Item designation	Weight gsm	Thread count		Ne		Construction Threads per inch	
			cm	inch	Warp	Weft	Warp	Weft
			MicroTencel/cotton fine batiste	CMP 150	91	134	341	90

### 95% LENZING Lyocell Micro / 5% Silk

	Item designation	Weight gsm	Thread count		Ne		Construction Threads per inch	
			cm	inch	Warp	Weft	Warp	Weft
			MicroTencel/silk batiste	CMS 150	95	128	326	80

### 64% Cotton, 36% Outlast

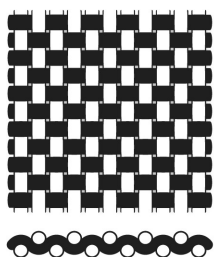
	Item designation	Weight gsm	Thread count		Ne		Construction Threads per inch	
			cm	inch	Warp	Weft	Warp	Weft
			CO-Outlast-Batiste	PO 100	125	92	234	60

### 65% Polyester / 35% Cotton

	Item designation	Weight gsm	Thread count		Ne		Construction Threads per inch	
			cm	inch	Warp	Weft	Warp	Weft
			PES/Cotton Percale	4330	155	74	187	30

All mentioned specifications are average values.

*downproof*



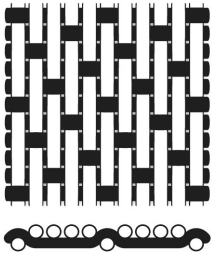
**Leinwand**  
*Plain*

## Plain 1/1

35% Kanecaron / 35% Cotton / 30% Modal

	Item designation	Weight gsm	Thread count		Ne		Construction Threads per inch	
			cm	inch	Warp	Weft	Warp	Weft
Kanecaron percale - Flame retardant	KanP3	147	90	229	36	40	127	102

All mentioned specifications are average values.



Satin  
Sateen

downproof

## Sateen 4/1

### 100% Cotton

	Item designation	Weight gsm	Thread count		Ne		Construction Threads per inch	
			cm	inch	Warp	Weft	Warp	Weft
			Mako Sateen	AD 90	140	130	329	60
Down-Sateen - Jacquard	AD 120	130	151	383	60	80	173	210
Noble down sateen	AD 135	110	154	391	80	80	210	181
Noble down sateen - doobby-weave	AD 135	110	152	387	80	80	206	181

### 85/15% Cotton/Lurex

	Item designation	Weight gsm	Thread count		Ne		Construction Threads per inch	
			cm	inch	Warp	Weft	Warp	Weft
			Noble down sateen - doobby-weave	Prestige	125	159	405	80

### 100% Cotton

	Item designation	Weight gsm	Thread count		Ne		Construction Threads per inch	
			cm	inch	Warp	Weft	Warp	Weft
			Down-Satin - Jacquard	Luxury	112	165	419	80
Premium Sateen	AD 200	94	191	485	120	120	245	240

All mentioned specifications are average values.

*downproof*



## Sateen 4/1

54% LENZING™ Lyocell Micro 40% Cotton 6% Silk

	Item designation	Weight gsm	Thread count		Ne		Construction Threads per inch	
			cm	inch	Warp	Weft	Warp	Weft
MicroTencel/cotton/silk sateen	MSD	129	148	375	60	80	200	175

All mentioned specifications are average values.