

Leinwand
Plain

Plain 1/1

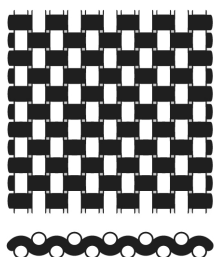
100% Cotton

	Item designation	Weight gsm	Thread count		Ne		Construction Threads per inch	
			cm	inch	Warp	Weft	Warp	Weft
			Renforce light	3027	117	57	144	30
Renforce	3030	126	59	150	30	30	75	75
Percale	4731	118	79	200	40	40	120	80
Fiber batiste - Pre-shrink Finish	5440	96	94	238	60	60	138	100
Fine batiste	5480	93	97	247	60	80	138	109
Noble batiste extrafine	6190	82	113	286	80	90	157	129
Noble batiste superfine	6495	81	122	310	100	90	160	150

100% GOTS-Cotton (Organic Cotton)

	Item designation	Weight gsm	Thread count		Ne		Construction Threads per inch	
			cm	inch	Warp	Weft	Warp	Weft
			GOTS-Renforce - GOTS-Finish	3030 GOTS	126	59	150	30
GOTS Percale - GOTS-finish	4731 GOTS	118	79	200	40	40	120	80
GOTS cotton batiste - GOTS-Finish	5440 GOTS	96	94	238	60	60	138	100

All mentioned specifications are average values.



Leinwand
Plain

Plain 1/1

52% LENZING™ Lyocell Micro / 48% Cotton

	Item designation	Weight gsm	Thread count		Ne		Construction Threads per inch	
			cm	inch	Warp	Weft	Warp	Weft
			MicroTencel/cotton batiste	5410	97	95	241	60

50% LENZING™ Lyocell Micro / 50% Cotton

	Item designation	Weight gsm	Thread count		Ne		Construction Threads per inch	
			cm	inch	Warp	Weft	Warp	Weft
			Micro-Tencel/cotton fine batiste	6210	85	123	313	90

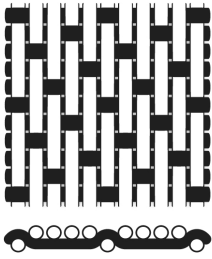
65% Polyester / 35% Cotton

	Item designation	Weight gsm	Thread count		Ne		Construction Threads per inch	
			cm	inch	Warp	Weft	Warp	Weft
			PES/cotton percale	4430	109	73	186	45

35% Kanecaron / 35% Cotton / 30% Modal

	Item designation	Weight gsm	Thread count		Ne		Construction Threads per inch	
			cm	inch	Warp	Weft	Warp	Weft
			Kanecaron fp-Percale - Flame retardant	Kan70fd	139	83	212	36

All mentioned specifications are average values.



Satin
Sateen

fiberproof

Sateen 4/1

100% Cotton

	Item designation	Weight gsm	Thread count		Ne		Construction Threads per inch	
			cm	inch	Warp	Weft	Warp	Weft
			Fiber sateen	5031	125	81	206	40
Fine sateen	6845	110	113	286	60	60	173	113
Dobby fine satin - doobby weave	6845 doobby	110	113	286	60	60	173	113
Noble sateen	7557	97	131	332	80	80	185	147

100% Organic Cotton (GOTS)

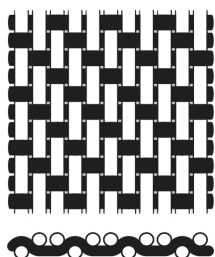
	Item designation	Weight gsm	Thread count		Ne		Construction Threads per inch	
			cm	inch	Warp	Weft	Warp	Weft
			Fiber sateen - GOTS-finish	5031 GOTS	125	81	206	40

100% LENZING™ Lyocell Micro

	Item designation	Weight gsm	Thread count		Ne		Construction Threads per inch	
			cm	inch	Warp	Weft	Warp	Weft
			Micro Tencel fine sateen	7240	112	113	287	60

All mentioned specifications are average values.

fiberproof



Köper
Twill

Twill 2/1

100% Cotton

	Item designation	Weight gsm	Thread count		Ne		Construction Threads per inch	
			cm	inch	Warp	Weft	Warp	Weft
Fine twill	5435	126	89	226	40	40	138	88

All mentioned specifications are average values.