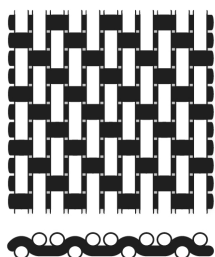


fiberproof



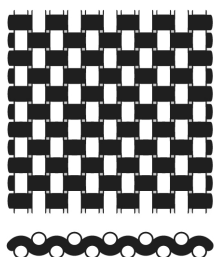
**Köper**  
*Twill*

## Twill 2/1

100% Cotton

	Item designation	Weight gsm	Thread count		Ne		Construction Threads per inch	
			cm	inch	Warp	Weft	Warp	Weft
Fine twill	5435	126	89	226	40	40	138	88

All mentioned specifications are average values.



Leinwand  
Plain

## Plain 1/1

### 100% Cotton

	Item designation	Weight gsm	Thread count		Ne		Construction Threads per inch	
			cm	inch	Warp	Weft	Warp	Weft
Renforce light	3027	117	57	144	30	30	76	68
Renforce	3030	126	59	150	30	30	75	75
Percale	4731	118	79	200	40	40	120	80
Fiber batiste - Pre-shrink Finish	5440	96	94	238	60	60	138	100
Fine batiste	5480	93	97	247	60	80	138	109
Noble batiste extrafine	6190	82	113	286	80	90	157	129
Premium Batiste extrafine	9090	67	124	315	110	110	165	150

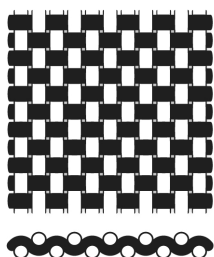
### 100% Organic Cotton (GOTS)

	Item designation	Weight gsm	Thread count		Ne		Construction Threads per inch	
			cm	inch	Warp	Weft	Warp	Weft
GOTS Percale	4731 GOTS	118	79	200	40	40	120	80
GOTS cotton batiste	5440 GOTS	96	94	238	60	60	138	100

### 52% LENZING™ Lyocell Micro / 48% Cotton

	Item designation	Weight gsm	Thread count		Ne		Construction Threads per inch	
			cm	inch	Warp	Weft	Warp	Weft
MicroTencel/cotton batiste	5410	97	95	241	60	60	138	103

All mentioned specifications are average values.



Leinwand  
Plain

## Plain 1/1

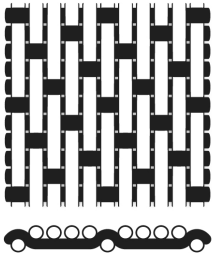
### 50% LENZING™ Lyocell Micro / 50% Cotton

	Item designation	Weight gsm	Thread count		Ne		Construction Threads per inch	
			cm	inch	Warp	Weft	Warp	Weft
			Micro-Tencel/cotton fine batiste	6210	85	123	313	90

### 65% Polyester / 35% Cotton

	Item designation	Weight gsm	Thread count		Ne		Construction Threads per inch	
			cm	inch	Warp	Weft	Warp	Weft
			PES/cotton percale	4430	109	73	186	45

All mentioned specifications are average values.



Satin  
Sateen

*fiberproof*

## Sateen 4/1

### 100% Cotton

	Item designation	Weight gsm	Thread count		Ne		Construction Threads per inch	
			cm	inch	Warp	Weft	Warp	Weft
			Fiber sateen	5031	125	81	206	40
Fine sateen	6845	110	113	286	60	60	173	113
Dobby fine satin - doobby weave	6845 doobby	110	113	286	60	60	173	113
Noble sateen	7557	97	131	332	80	80	185	147

### 100% Organic Cotton (GOTS)

	Item designation	Weight gsm	Thread count		Ne		Construction Threads per inch	
			cm	inch	Warp	Weft	Warp	Weft
			Fiber sateen	5031 GOTS	125	81	206	40

### 100% LENZING™ Lyocell Micro

	Item designation	Weight gsm	Thread count		Ne		Construction Threads per inch	
			cm	inch	Warp	Weft	Warp	Weft
			Micro Tencel fine sateen	7240	112	113	287	60

All mentioned specifications are average values.