

Köper
Twill

downproof

Twill 2/1

100% Cotton

	Item designation	Weight gsm	Thread count		Ne		Construction Threads per inch	
			cm	inch	Warp	Weft	Warp	Weft
Cotton Twill	KJ	185	77	196	30	20	117	79
Fine twill	KL	158	89	227	40	30	130	97
Mako twill	KM	150	98	250	40	40	140	110
Mako Twill - dobby-weave	KM Dobby	153	99	252	40	40	131	121
Fine twill, light	KE	118	115	291	60	60	139	152
Fine twill, light - dobby weave	KE-Dobby	122	115	293	60	60	145	148
Premium twill	K200	89	165	420	120	120	220	200

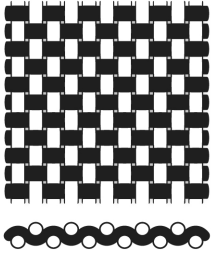
100% Organic Cotton (GOTS)

	Item designation	Weight gsm	Thread count		Ne		Construction Threads per inch	
			cm	inch	Warp	Weft	Warp	Weft
Fine twill - GOTS-Finish	KL GOTS	158	89	227	40	30	130	97

35% Kanecaron / 35% Cotton / 30% Modal

	Item designation	Weight gsm	Thread count		Ne		Construction Threads per inch	
			cm	inch	Warp	Weft	Warp	Weft
Kanecaron twill - flame retardant	KanK3	204	88	223	30	30	127	96

All mentioned specifications are average values.



Leinwand
Plain

downproof

Plain 1/1

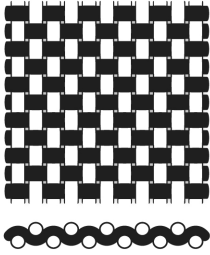
100% Cotton

	Item designation	Weight gsm	Thread count		Ne		Construction Threads per inch	
			cm	inch	Warp	Weft	Warp	Weft
			Linen cloth	3327	156	62	157	20
Mako Cambric	TE 70	136	88	223	40	40	128	95
Down batiste	TE 100	105	105	266	60	60	134	132
Down batiste Stripes - Dessin 050	TE 100	108	107	272	60	60	137	135
Fine down batiste	TE 135	90	121	307	80	80	154	153
Fine down batiste	TE 150	88	131	334	90	90	184	150
Noble down batiste	TE 200	75	138	351	110	110	179	172
Premium down batiste	TE 250	72	144	365	120	120	193	172
Superior down batiste	TE 270	69	150	380	120	150	194	186

100% Organic Cotton (GOTS)

	Item designation	Weight gsm	Thread count		Ne		Construction Threads per inch	
			cm	inch	Warp	Weft	Warp	Weft
			Mako-Cambric - GOTS-Finish	TE 70 GOTS	138	88	223	40
Down Batiste - GOTS-Finish	TE100 GOTS	108	105	266	60	60	135	131
Fine down batiste - GOTS-Finish	TE135 GOTS	95	121	307	80	80	154	153

All mentioned specifications are average values.



Leinwand
Plain

Plain 1/1

52% MicroTencel / 48% Cotton

	Item designation	Weight gsm	Thread count		Ne		Construction Threads per inch	
			cm	inch	Warp	Weft	Warp	Weft
			MicroTencel/cotton fine batiste	CMP 150	91	134	341	90

95% MicroTencel / 5% Silk

	Item designation	Weight gsm	Thread count		Ne		Construction Threads per inch	
			cm	inch	Warp	Weft	Warp	Weft
			MicroTencel/silk batiste	CMS 150	95	128	326	80

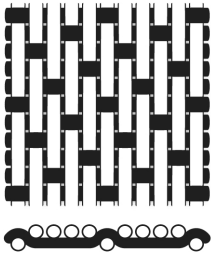
64% Cotton, 36% Outlast

	Item designation	Weight gsm	Thread count		Ne		Construction Threads per inch	
			cm	inch	Warp	Weft	Warp	Weft
			CO-Outlast-Batiste	PO 100	125	92	234	60

65% Polyester / 35% Cotton

	Item designation	Weight gsm	Thread count		Ne		Construction Threads per inch	
			cm	inch	Warp	Weft	Warp	Weft
			PES/cotton percale	4330	155	74	187	30

All mentioned specifications are average values.



Satin
Sateen

downproof

Sateen 4/1

100% Cotton

	Item designation	Weight gsm	Thread count		Ne		Construction Threads per inch	
			cm	inch	Warp	Weft	Warp	Weft
			Mako Sateen	AD 90	133	130	329	60
Down-Sateen - Jacquard	AD 120	130	151	383	60	80	173	210
Down-Satin	Luxury	112	165	419	80	90	208	211
Noble down sateen	AD 135	110	154	391	80	80	210	181
Noble down sateen - dobby-weave	AD 135	110	152	387	80	80	206	181
Premium Sateen	AD 200	94	191	485	120	120	245	240

85/15% Cotton/Lurex

	Item designation	Weight gsm	Thread count		Ne		Construction Threads per inch	
			cm	inch	Warp	Weft	Warp	Weft
			Noble down sateen - dobby-weave	Prestige	128	159	405	80

54% MicroTencel / 40% Cotton / 6% Silk

	Item designation	Weight gsm	Thread count		Ne		Construction Threads per inch	
			cm	inch	Warp	Weft	Warp	Weft
			MicroTencel/cotton/silk sateen	MSD	129	148	375	60

All mentioned specifications are average values.